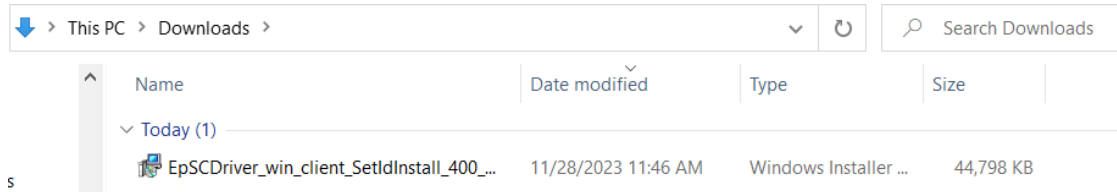


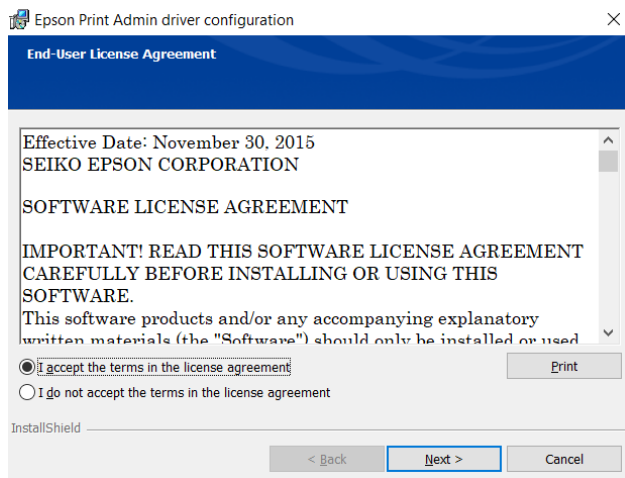
1. Run the installer.



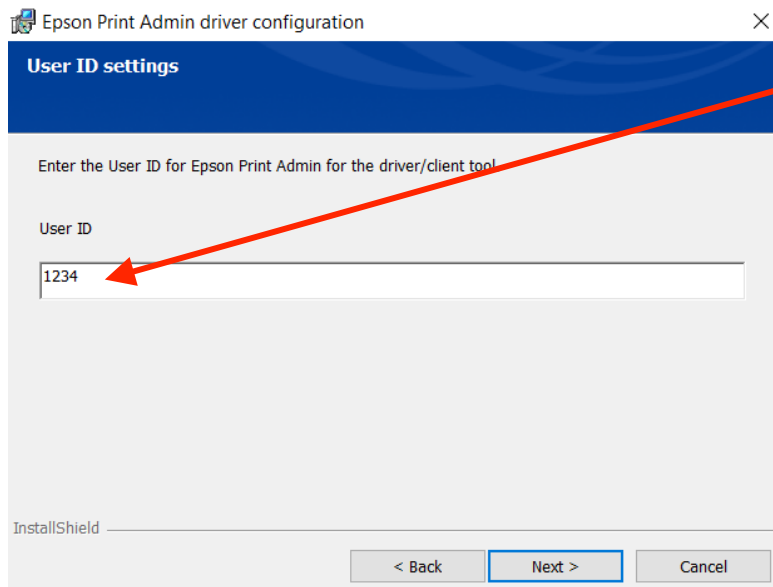
(You can also find it in File Explorer→Downloads.)



2. Accept the terms and click next.

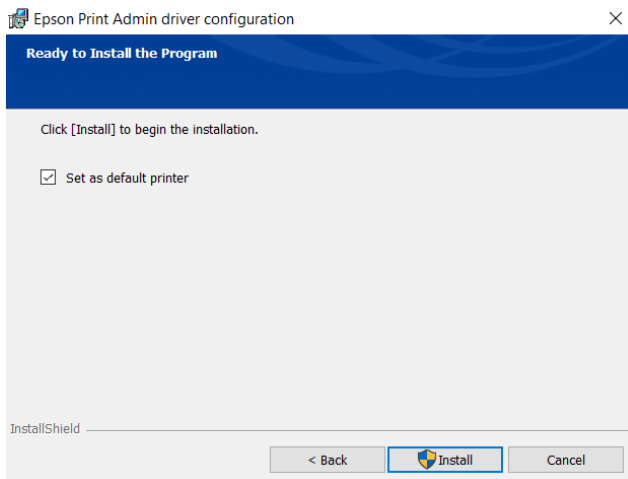


3. Input your user ID and click next.

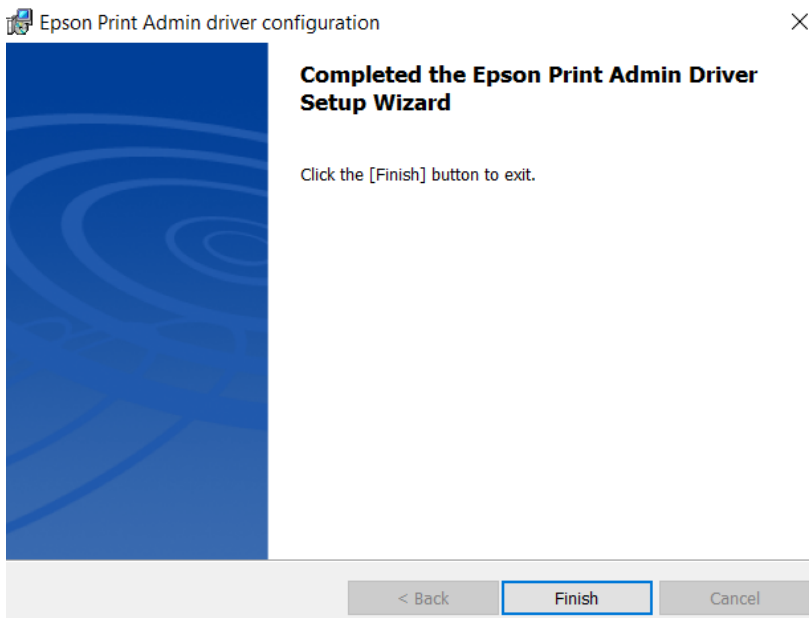


Starts with "6e"  
If you have a private office, it's the same as your keycard number  
If you have a desk, it's the number on your monthly invoice.

#### 4. Install.



#### 5. Finish.



#### 6. When prints, select Epson Print Admin as printer.

